

KS1  
Spring 2

Manor Leas Infant School Knowledge Organiser

Science

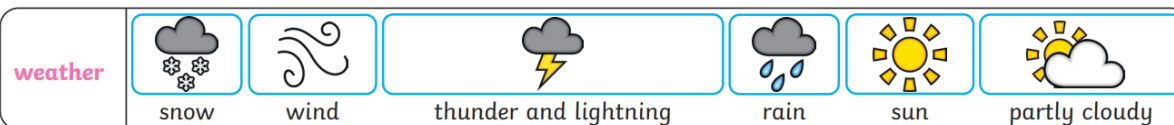
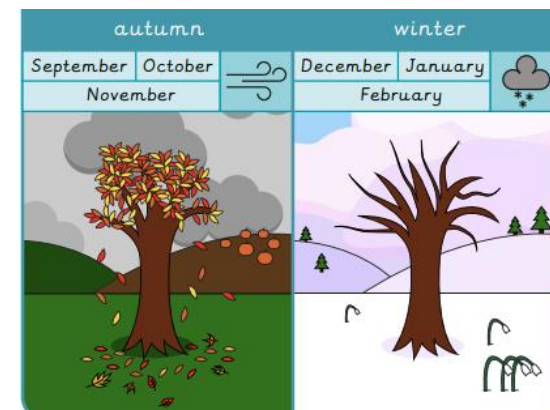
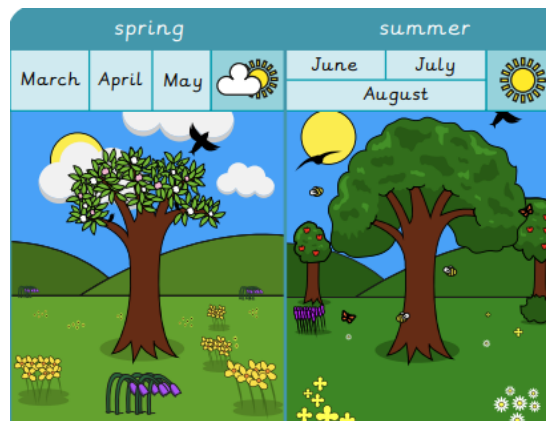
Seasonal Change Spring and Summer



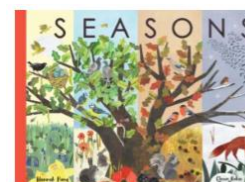
Star Words	Definition
Seasons	In the UK, there are four seasons each year. They are Spring, Summer, Autumn and Winter.
Spring	In this season temperatures rise and the earth starts to warm up. Flowers begin to grow. This season is associated with rebirth and growth, some baby animals are born (e.g. lambs and chicks),
Summer	The hottest time of the year. There is usually sunshine, generally dry weather but there may be thunderstorms too! Flowers and trees are in bloom.
Weather	The weather includes the temperature outside, how windy it is and rainfall (how much it rains). We can also describe cloud, snow and sun.
Daylight	Daylight is when it is light outside. The amount of daylight changes with each season.

### Sticky Knowledge

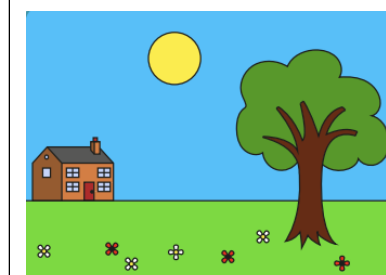
January February March April May June July August September October November  
December



### Helpful Books and Websites



[What are the seasons? – KS1 Science curriculum - BBC Bitesize](#)



Summer has the **most** daylight hours.

### Home Learning Ideas

Can you go on a Spring and Summer walk? What did you see and find?

